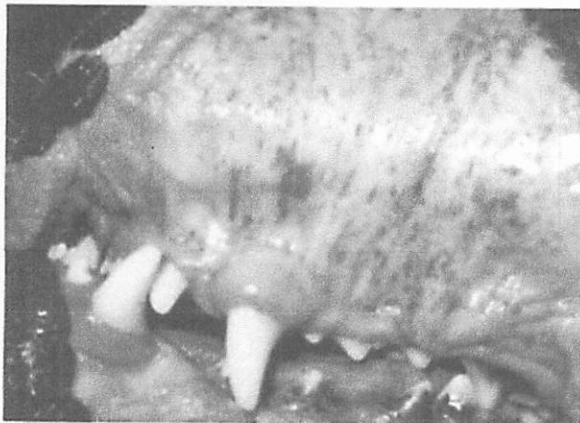


Identifying Petechiae

Petechiae are pinpoint bruises caused by burst capillaries (small blood vessels) that can be visible on the surface of the skin or gums of your pet. Petechiae can indicate low platelet levels. Platelets are the components in the blood that allow blood to clot in order to stop bleeding. Low platelet levels can become dangerous if left unchecked, as the body has no way of healing itself even from minor trauma. There are many causes for low platelet levels, ranging from ingestion of toxic materials to immune-mediated disease. Some of the most common causes are tick-borne diseases like Anaplasmosis or Ehrlichiosis. These organisms are transmitted by ticks, infect the blood, and attack the platelets.

If your pet is diagnosed with a tick-borne disease, your veterinarian will want to run a complete blood count to assess their platelet level, and look at a blood sample under the microscope to ensure the health of the blood cells. We recommend regularly monitoring the blood with these tests every 4-6 months to catch any changes early on.

It's important to monitor your pet at home for petechiae (as shown in these pictures), bruising, and lethargy, as these signs can be indicative of hemorrhage going on elsewhere in the body. If you notice these signs you should contact your veterinarian right away.



Great Brook Animal Care
1468 Carl Broggi Hwy Lebanon, ME 04027
(207) 339-0700 greatbrookac@metrocast.net